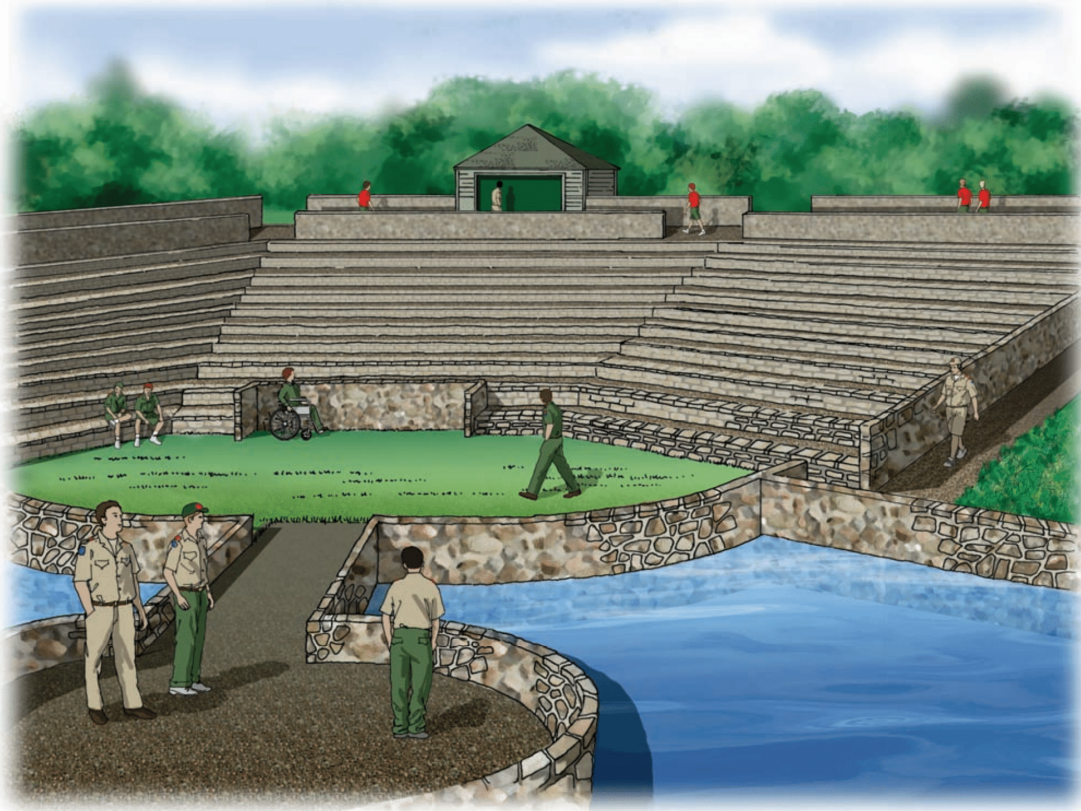


Camp Master Planning | Camp Support

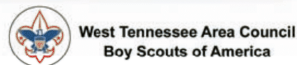
Executive Summary of Ideas/Recommendations

- Entrance way that delivers on ease of entry/exit and drop off, plus provides a good impression upon arrival
 - Paved road up to entry with speed bumps, clear signage, plantings maintained by campers at entrance sign
- Multi-purpose building to encompass the visitor center, health office, training center and leader lounge (include business center)
- Dining facility that incorporates two wings to allow for scalability up to 700 campers, leaders and staff with covered space allocated for 25% of campers to sit outdoors, plus incorporates the trading post to leverage the same kitchen/ supply facility as the dining hall.
- Amphitheater that is placed in a scenic area of the camp and can accommodate up to 700 + with stone/ permanent seating to keep maintenance cost low.
- 2 bedroom, 1 bath campmaster house to attract talented leader for camp staff; adjacent to multi-purpose admin building

Amphitheater



COUNCIL RING AMPHITHEATER



West Tennessee Area Council
Boy Scouts of America



Desired specs:

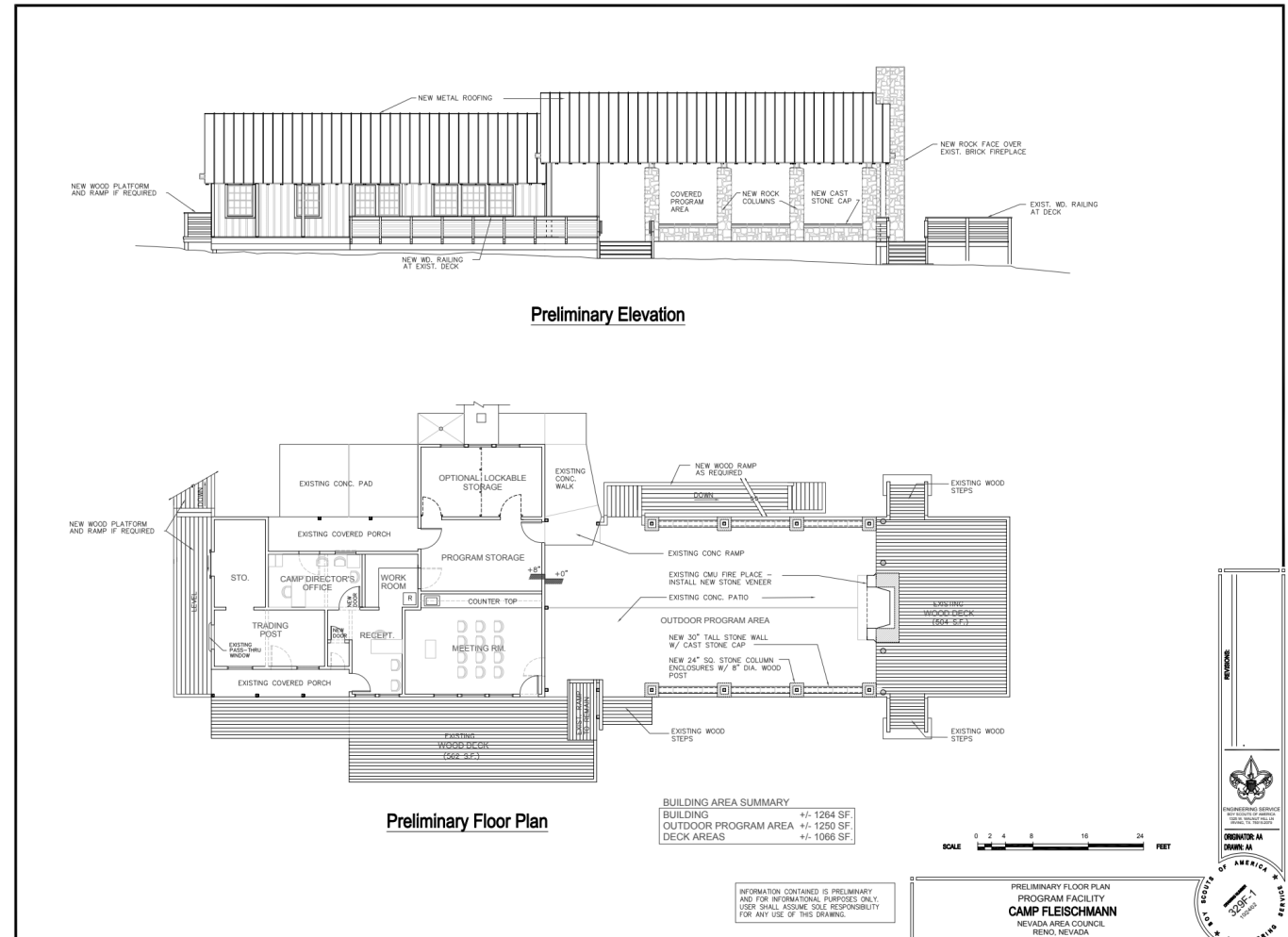
- Scenic location/view (lake, cliff, etc.)
- Seats 700.
- Sound system, lighting
- Natural-looking stone or concrete seating in rows

Multipurpose Building

- Visitor Center, Restroom, Health Office, Training Center, Leader Lounge (Business Center)

Desired specs:

- Sliding walls
- A/V
- Internet/Wi-Fi

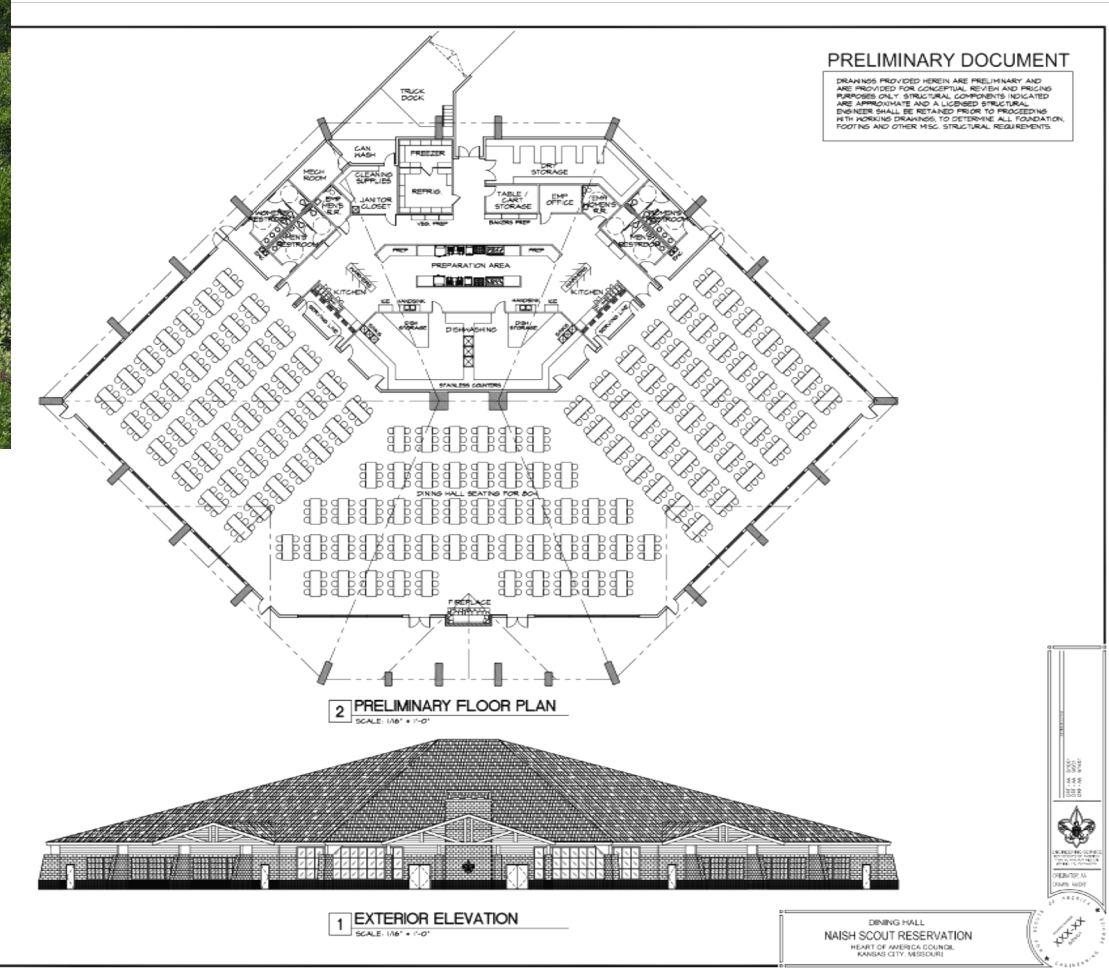


Dining Hall



Desired specs:

- Seats 700
- Flexible capacity and use (e.g., stage)
- Centralized kitchen
- Outdoor seating options with shade
- Trading post within hall?



Entrance & Signage

This:



Not this:



Desired specs:

- Branded signage coming into camp
- Gravel or asphalt parking (paved for ADA)
- Short paved walk to multipurpose building
- Walking paths between buildings



Entrance & Signage

This:



Not this:

