

CAMP MASTER PLANNING | INFRASTRUCTURE

Brandon Ridenbaugh

Vince Phillips

Darren Coe

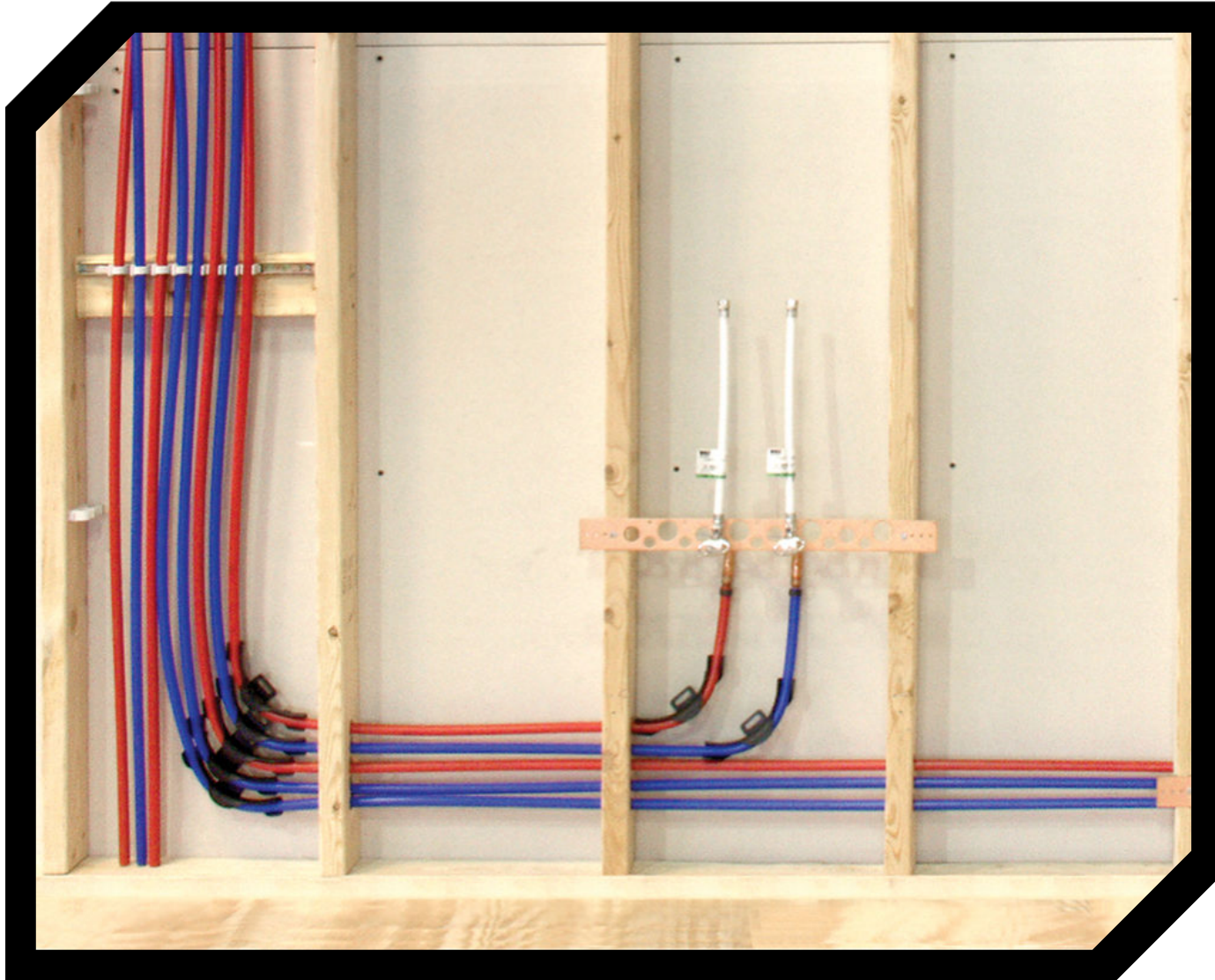
Phil Smith

PARAMETERS

- ▶ 750 Total people on camp
- ▶ Power distributed to desired areas of camp
- ▶ Potable water / wastewater to desired areas of camp
- ▶ End user convenience , serviceable, reliable
- ▶ All facilities are year-round with heating and cooling , not three season use

WATER

- ▶ 750 Total people on camp
- ▶ Municipal water would be preferred
 - Would require new services, meters, supporting plumbing
- ▶ Plumbing sizes would vary based on components being used, location, capacity, etc.
- ▶ All plumbing additions would be done in crimped pex tubing to support a reliable, serviceable connection / installation.



PEX IS CHEAPER THAN COPPER.
HALF-INCH PEX TUBING COSTS
ABOUT A THIRD THE PRICE OF
COPPER.

PEX FITTINGS ARE FASTER TO
INSTALL THAN COPPER.

A PEX SUPPLY WON'T
CORRODE LIKE COPPER.

WASTEWATER

- ▶ Water Usage based on 750 people on camp
 - 50,000 Gallons per day
 - 32,500 Gallons Per day gray water
 - 17,500 Gallons per day black water
- ▶ Wastewater treatment style will have to be sized, zoned, maintained in a manner to support both on and off-season usage
 - On season usage of 50,000 Gallons per day
 - Off season usage of 25,000 Gallons per day

RESTROOMS

- ▶ 750 Total people on camp
- ▶ Restroom facilities support year-round use without draining lines or shutting down for winter
- ▶ Unisex, single use facilities
 - Single units can be taken offline for repair and service
 - Reduced quantity of restrooms needed by not separating by use
- ▶ Individual showers could be incorporated into design to eliminate separate shower facilities
 - Eliminates need for separate shower facilities for adults / youth, male/female

ELECTRICAL SERVICE

- ▶ 3 Phase power would be an ideal accommodation
 - Requires new power service, drops, meter, cable
- ▶ 3 Phase power would be provided to key areas
 - Dining hall / Kitchen
 - Pool
 - Waterfront
 - Maintenance compound
- ▶ 3 phase would be converted to single phase to provide power to remaining desired areas of camp

WAREHOUSE / STORAGE

- ▶ Modern pallet style shelving
 - Heavy duty
 - Taller
 - Adjustable
 - Safer
- ▶ Organization
 - Lift truck access
 - Inventory management
- ▶ Truck and trailer access
- ▶ Weather and critter proof

MAINTENANCE COMPOUND

- ▶ Modern design
- ▶ HVAC
- ▶ Steel construction
 - Drive through bays for vehicle and equipment
- ▶ Weather and critter proof
- ▶ 5-6 bay work areas
- ▶ Tool storage
 - Secure for camp tools
 - Secure place for properties committee
- ▶ Secure access / storage
 - Limited access
 - Security measures

CONVENIENCES

- ▶ Laundry facility
 - Coin operated?
- ▶ Defined roads
 - Asphalt
 - Limestone
 - Other media
- ▶ Signage
- ▶ Water runoff management
- ▶ Drainage